



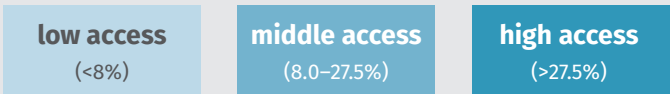
Accessing Economic Opportunity: York County, PA

Opportunity Employment

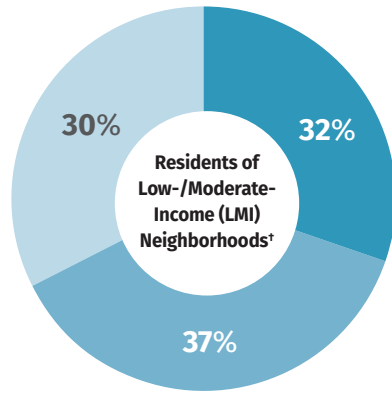
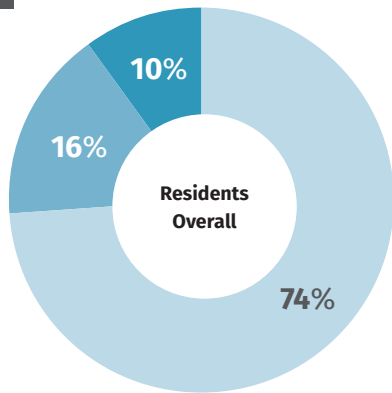
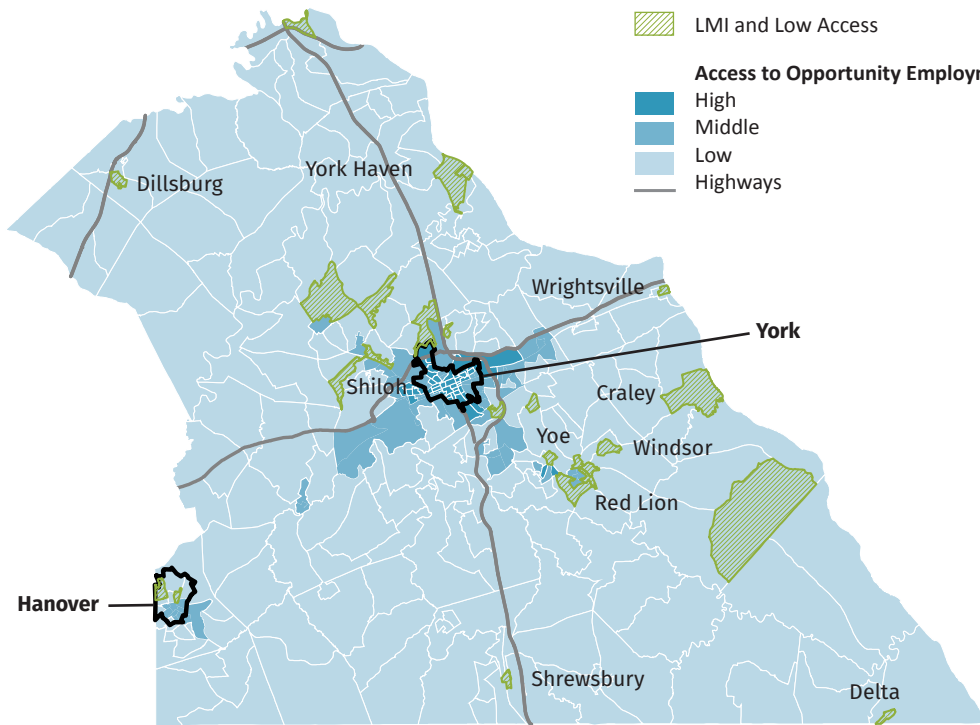
Jobs that do **not require a four-year college degree** and pay above the national annual median wage, once adjusted for local differences in price levels. In 2015, these were jobs that **paid above \$34,824**.

Access to Opportunity Employment


Neighborhoods were classified according to the percent of regional opportunity employment accessible by transit in 60 minutes.*




ACCESS TO JOBS IN YORK COUNTY




The average resident can access **7 percent** of opportunity employment within a 60-minute weekday morning commute.*



74 percent of residents overall have **low access to opportunity employment**, 16 percent have middle access, and 10 percent have high access.



10 percent of residents with low access **live in LMI neighborhoods**.

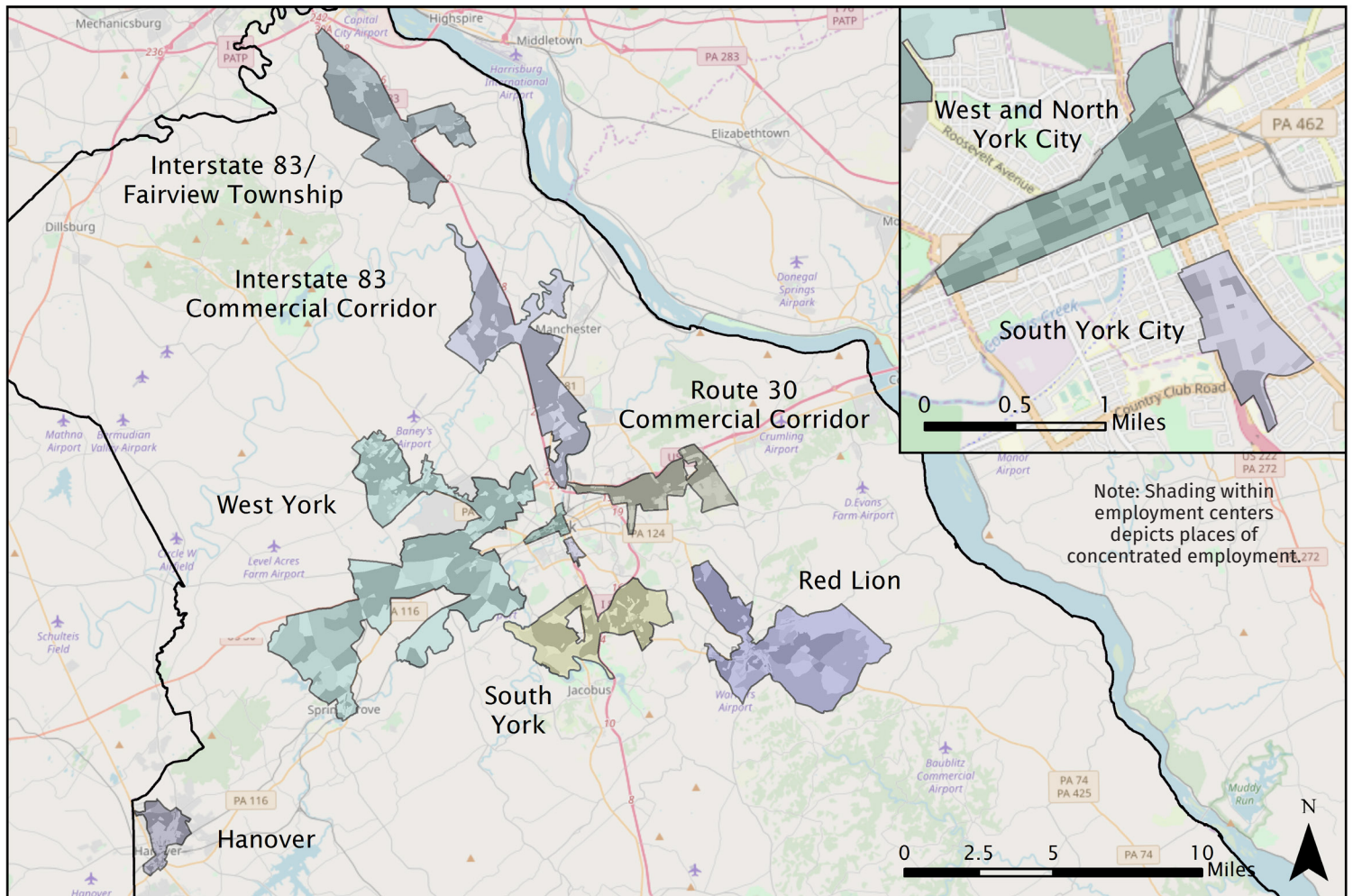
* The 60-minute commute time includes no more than a total of 20 minutes of walking. † LMI neighborhoods had a 2015 median household income less than \$46,615.

ACCESS TO TALENT IN YORK COUNTY

Employment centers have greater than expected job density and **at least 4,000 jobs**.

51% of employment is located in **9 employment centers**.

The **5 largest employment centers** are accessible by **less than 10 percent of prime-age residents** (25–54 years old).



| Employment Center | Employment | Percent of County Employment | Average Share of Prime-Age Residents with Access | Average Share of Residents of Low- and Moderate-Income Neighborhoods with Access |
|-----------------------------------|---------------|------------------------------|--|--|
| West York | 18,552 | 11% | 9% | 25% |
| Route 30 Commercial Corridor | 16,124 | 10% | 6% | 18% |
| Interstate 83 Commercial Corridor | 11,480 | 7% | 4% | 13% |
| South York | 8,161 | 5% | 3% | 7% |
| Hanover | 8,025 | 5% | 4% | 7% |
| West and North York City | 7,418 | 4% | 23% | 61% |
| South York City | 5,708 | 3% | 18% | 54% |
| Interstate 83/Fairview Township | 5,283 | 3% | 0% | 0% |
| Red Lion | 4,074 | 2% | 2% | 7% |
| Total Center Employment | 84,825 | 51% | | |

For more information and to view the complete report, please visit www.PhiladelphiaFed.org

Sources: Authors' calculations using data obtained from rabbittransit, Capital Area Transit (CAT), Open Street Map (OSM), 2011–2015 American Community Survey (ACS) Public Use Microdata Sample (PUMS), Bureau of Economic Analysis (BEA) Regional Price Parities (RPPs) (2011–2015), Longitudinal Employer–Household Dynamics Origin–Destination Employment Statistics (LEHD LODS) (2015), U.S. Census TIGER/Line Shapefiles, and Pennsylvania Department of Transportation (PennDOT)